

# Become a Rainforest Explorer!

Become an intrepid explorer of the rainforest in ZSL Whipsnade Zoo's Butterfly House.

- 1) In pairs, **walk slowly** around the house, **noting down** every different animal (or species) you see - use the identification sheet on the back of this spotters sheet to help you identify them. You won't just find butterflies, so **keep your eyes peeled** for other animals too!



- 2) Keep a **tally** of how many of each species you see
- 3) Explorers like to know where in the habitat an animal lives, so be sure to write down where you see the animals (their **microhabitat**).
- 4) After you've finished exploring, see which species you saw the most of, and which microhabitat had the most animals in it.
- 5) Discuss in groups - what made the animals you saw so good at living in a rainforest habitat?

**Remember** - you're in the animals' home, so respect them by being quiet and making sure not to touch them as butterflies and moths are very fragile.

# Butterfly House spotting sheet

[illegible]

# SPOTTER'S GUIDE

## Frequent Flyers...

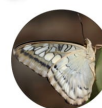
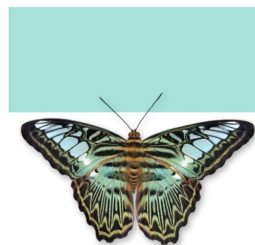
What can you spot in the Butterfly House today?



Glasswing



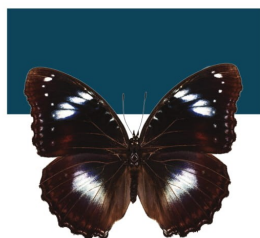
Large tree nymph



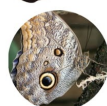
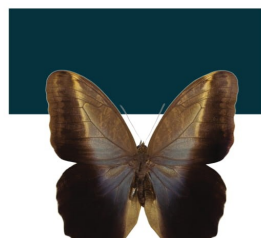
Blue clipper



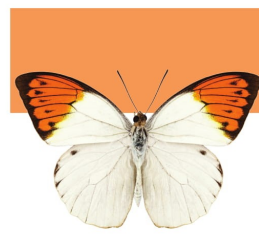
Blue morpho



Great eggfly



Owl butterfly



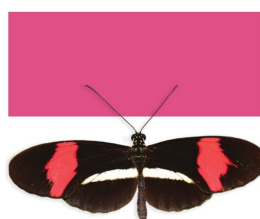
Great orange-tip



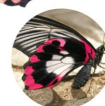
Red lacewing



Atlas moth



Postman



Scarlet mormon



Common crow

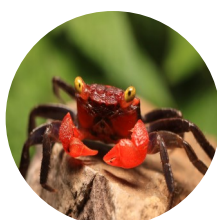
## Other animals:



West African dwarf crocodile



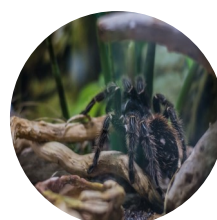
Crested wood partridge



Vampire crab



Madagascan hissing cockroach



Salmon pink bird eating spider



Giant spiny stick insect